

Prepared by: Zieske Land Surveying, Inc. Address: Box 94, Windom, MN 56101 Phone: (507) 831-0100

**UNITED STATES PUBLIC LAND SURVEY CORNER CERTIFICATE FOR**

Land survey monuments situated in Section 34, Township 106 North, Range 40 West, of the Fifth Principal Meridian, Murray County, Minnesota..

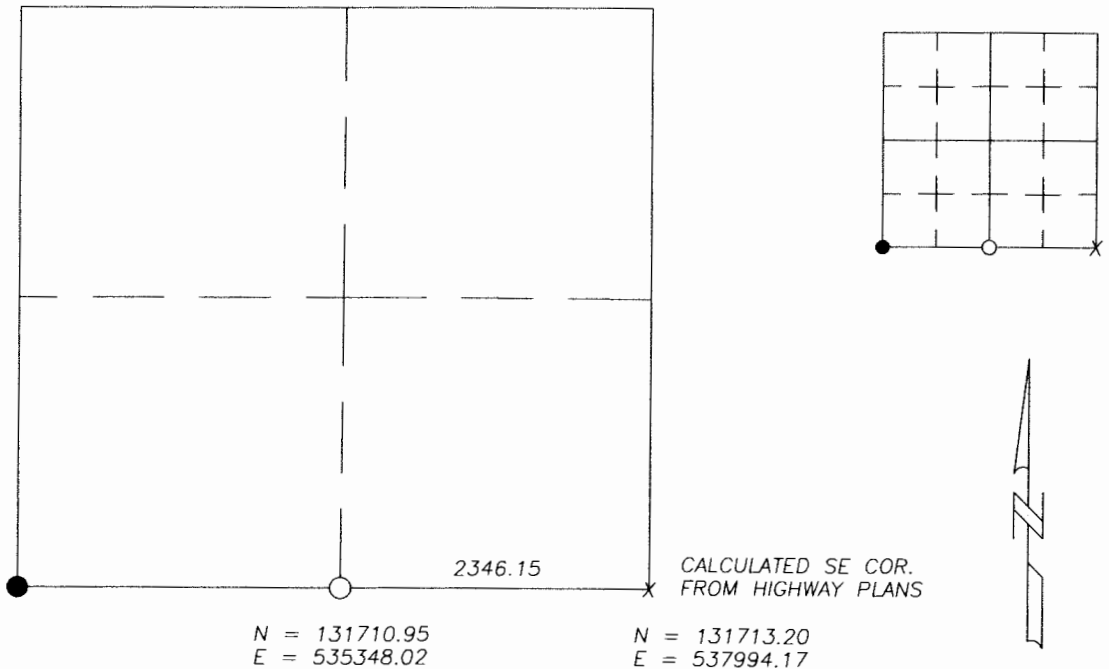
Previously recorded in N/A in County Recorder's Office.

(Show reason for preparing this certificate, the evidence and detailed procedure used in establishing the corner position & monumentation found or placed.)  
MONUMENT DESCRIPTION AND REMARKS: On September 18, 2007 we searched for South 1/4 corner with

backhoe and found a 9" X 12" stone 6" below surface at C Township Road and occupied line. County  
records indicate a stone in grade dated April 27, 1899. Accepted stone as corner. Lowered stone and set  
a 1" Iron Pipe with survey cap 23008 over top center of stone.

**PLAN-VIEW**

MURRAY COUNTY COORDINATES NAD 83 (1996)



I hereby certify that this land surveying document was prepared and related survey work was performed by me or under my direct supervision and that I am a duly licensed Land Surveyor under the laws of the State of Minnesota.

Perry L. Zieske 9-21-07  
Signature Date  
Perry Zieske  
License number 23008

Sheet 1 of 1

Corners to be Indexed

Corners	Section	Township	Range
S 1/4	34	106	40